

Somewhere in your life, without even knowing it.

SHIKOKU KASEI HOLDINGS CORPORATION

8-537-1, Doki-cho-higashi, Marugame-shi, Kagawa  
Phone: +81-877-22-4111  
<https://www.shikoku.co.jp/eng>



 **SHIKOKU**  
CORPORATE PROFILE





## Somewhere in your life, SHIKOKU KASEI.



With or without, your life will change.  
You're certain to encounter in your everyday life.  
Our "Doku-sou-ryoku (creativity)" generates products  
that support your daily lives with unprecedented ideas.

SHIKOKU KASEI HOLDINGS will continue to bring to bear its  
"Doku-sou-ryoku (creativity)" until totally new comforts  
in the fields of chemicals and housing materials,  
and even in behind-the-scenes fields,  
become a ubiquitous part of your life.



## ■ Top Message ■

SHIKOKU KASEI Group has its origins in a business started by two young engineers based on the invention of an innovative manufacturing method for carbon disulfide, the raw material for the chemical fiber rayon. It was 1947, shortly after the end of the war.

Since its founding, our DNA of “unique manufacturing methods” has gradually sublimated into unrivaled R&D capabilities, and today we are recognized as a chemical manufacturer with a number of products that, although niche, hold one of the world’s leading market shares.

Meanwhile, in 1970, we invented “JULUX,” an innovative plastering material that makes use of our knowledge of chemicals. Along with the exterior products, which we soon started, JULUX has shaped our Housing Materials business today.

With these “Chemicals” and “Housing Materials” as our two business pillars, we provide various products that support rich and comfortable living.

Under the constant corporate philosophy “Doku-sou-ryoku (creativity)” to turn creative thinking into the power of corporate development, we separated Chemicals operations under “SHIKOKU CHEMICALS CORPORATION” and Housing Materials operations under “SHIKOKU KASEI KENZAI CORPORATION.” We aim to promote the two businesses, with significantly different characteristics, for a large leap forward.

We “transform” the technologies that we have accumulated thus far into next-generation products, and create a virtuous cycle for the earth, people, and lifestyles through technology and product proposals. We see the word “KASEI” as the power to change while creating something better.

Our slogan is Toward "one-step-ahead, proposal" company with creativity.

We hope you will continue to support the SHIKOKU KASEI Group in its quest to become a 100-year company.

**Mitsunori Watanabe**

Representative Director, President



## ■ Corporate Philosophy ■

### We always value creativity as a driving force for company development

- “Doku-sou-ryoku (creativity)” is the eternal philosophy of SHIKOKU KASEI Group.
- Since inventing an innovative manufacturing method for carbon disulfide, we have considered creativity as the cornerstone of growth and the power of development.
- We will bring together the wisdom of each and every person involved, and will always break new ground using out-of-the-box ideas.



“Doku-sou-ryoku (creativity)”

## ■ The SHIKOKU KASEI Group’s Long-Term Vision ■

# Challenge 1000

Vision for  
2030

## Toward "one-step-ahead, proposal" company with creativity

Solve issues with creative ideas, leading the world

### Financial Goals

Net Sales  
**100.0 billion yen**

Operating profit  
**15.0 billion yen**

ROE  
**Above 10%**

### Pillars for Strategy

Business Reform Policy

Companywide  
Reform Policy

Proactive Investment

Achievement of SDGs

### YONPO-YOSHI (favorable in all four directions)

**Customers**  
“One-step-ahead” values

**Employees**  
Challenges and growth

**Shareholders**  
Profit return

**Society**  
A better tomorrow



# The SHIKOKU KASEI Group offers one-step-ahead value to suit a variety of lifestyles

“Chemicals” and “Housing Materials” are the two business pillars that underpin prosperous and comfortable living for people around the world.

## In households



### Household Product

We support clean lifestyles with products that utilize chlorinated isocyanurate technology, such as household pipe cleaning agents and washing machine drum cleaners.



### Carports

We have an ample lineup of carefully thought-out designs that match various lifestyles and complement the home, while protecting precious cars from the wind and rain.



### Construction/inspection of waste water facilities

We support a hygienic and comfortable living environment through the field of water treatment facilities, such as the construction, inspection, and cleaning of septic tanks.

## At schools



### Bicycle ports

Bicycle parking lots are used across a number of public facilities, such as train stations and hospitals. Various styles are available to suit the installation location and make the area more appealing.



### NEO-CHLOR

A highly safe disinfectant for pools that exhibits a strong and stable sterilizing power, even under strong ultraviolet rays, while also being kind on the eyes.



### Garbage containers

Contributes to the creation of a comfortable living environment by transforming the garbage storage area, which tends to be messy and unsanitary, into a clean and beautiful space.

## Around cities



### GliCAP

As a chemical for PWBs, it supports ever-evolving information and communication technologies such as 5G communication, which transmits huge amounts of data at high speed.



### Archways

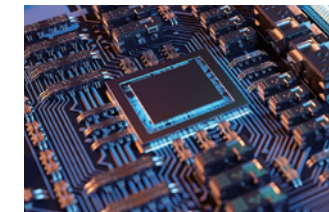
Archways protect pedestrians from strong sunlight and rain. They blend in with the scenery and help create beautiful cities.



### Insoluble sulfur

An essential raw material for radial tires. As one of the world's leading manufacturers, we contribute to the safety of tires by providing a stable supply of high-quality products.

## In offices and plants



### Glicat-SMD

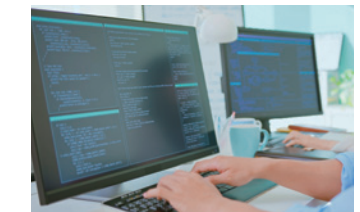
(Organic solderability preservative for PWBs)

An environmentally friendly water-soluble rust inhibitor for PWBs with the world's top share, and indispensable for smartphones and digital products used in everyday life.



### Accordion gates

The stretch mechanism provides compact storage as well as coverage for a wide area. In 1972, we became the first Japanese company to launch accordion gates and entered the exterior products field.



### System development

We have developed a system that respects the know-how and opinions of our customers. We contribute to the improvement of operations and productivity on-site.

## At restaurants



### Carbon disulfide

The first product we manufactured, and a raw material for the chemical fiber rayon. It is widely used in the clothing and hygienic product fields.



### JULUX

A wall coating material that utilizes the characteristics of “diatomaceous earth.” It offers features such as excellent humidity control, deodorization, and sound absorption. By reducing condensation, it provides a comfortable living space.



### Hamburger shop operation

We operate four hamburger franchise shops in Kagawa Prefecture. Our shops offer delicious food and a space to relax.

## Also in places like this



### NEO-CHLOR MARINE

This ballast water treatment agent serves to prevent damage to marine ecosystems caused by a ship's ballast water. We also handle ballast water management systems for ships and are working to develop a comprehensive business.



### ICOI

In addition to preventing secondhand smoking, the stylish appearance of the cubicles helps create a clean smoking space.



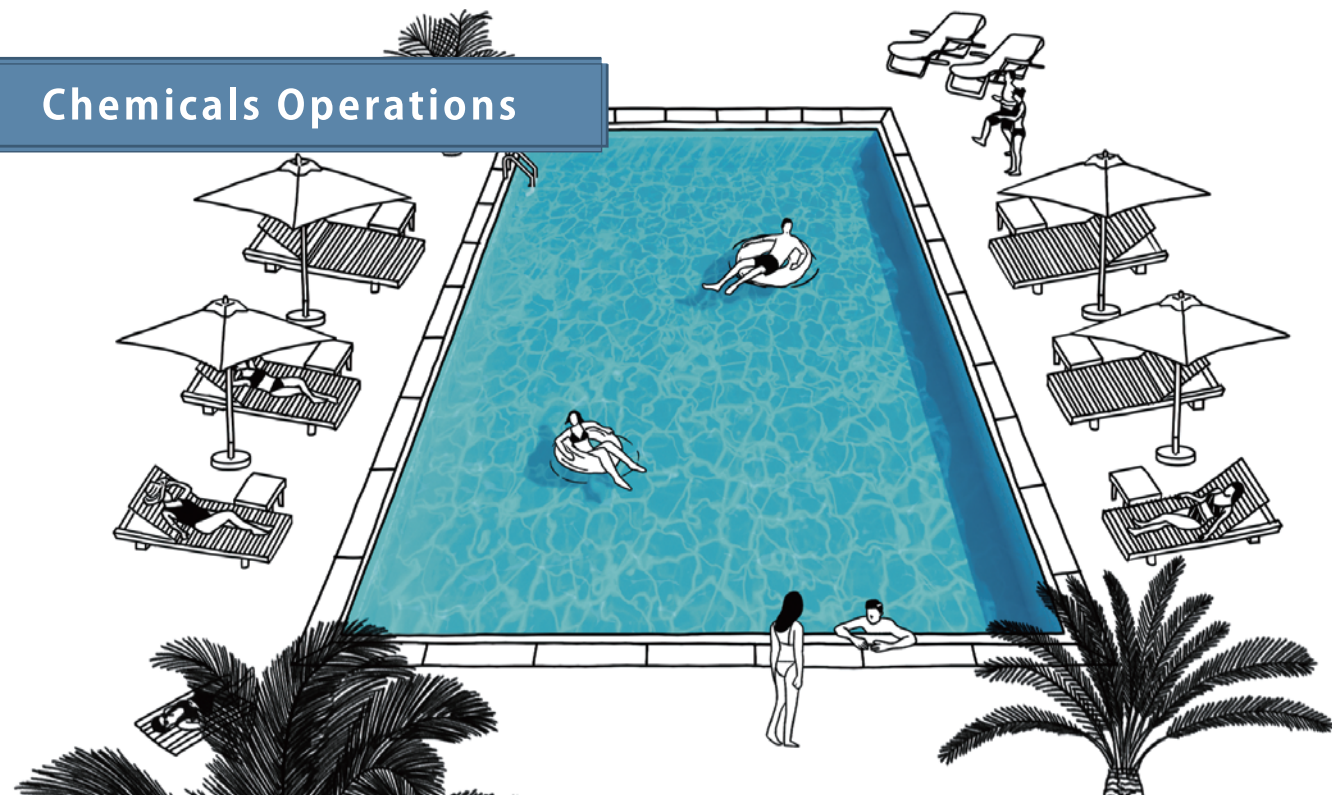
### Analytical work

We support a safe and secure living environment by highly precise measurement and analysis for the solution of environmental problems.





## Chemicals Operations



SHIKOKU KASEI Group  
supporting the Chemicals operations

Research and development, manufacture,  
and sales of inorganic chemicals, organic chemicals,  
and fine chemicals

**SHIKOKU CHEMICALS CORPORATION**

Manufacture, packaging, and transportation of  
various products

**SHIKOKU KOSAN CORPORATION**

Marketing and sales of chemicals and  
housing material products

**SHIKOKU INTERNATIONAL CORPORATION**

Manufacture and sales of carbon disulfide and  
hydrogen sulfide

**SHIKOKU RYUTAN CORPORATION**

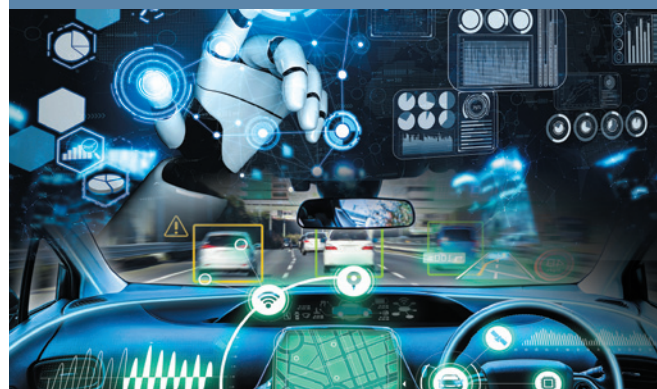
Research and development and manufacture of  
fine chemicals

**MASUDA CHEMICALS INDUSTRIES CO., LTD.**

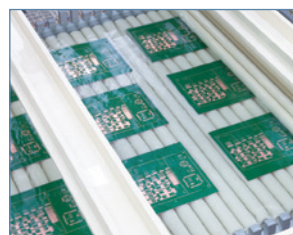
Chemical product marketing and sales  
**SHIKOKU INDIA PVT. LTD.**



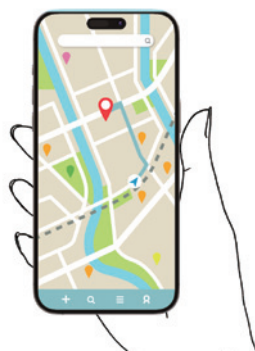
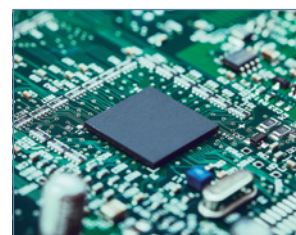
### Fine chemicals



Our heat-resistant water-soluble preflux, Glicoat-SMD, which protects the copper circuits on printed wiring boards (PWBs) from oxidation, boasts the top global share. We are also rolling out high value-added products in cutting-edge fields, such as compounds that contribute to improving the performance of resins, and GliCAP, an agent that improves adhesion in the chemical adhesion process, for which we aim to become the global standard in the era of 5G.



Treatment using Glicoat-SMD  
heat-resistant  
water-soluble preflux



## Chemicals that continue to evolve and deepen for the progress of the world

Inorganic chemicals that contribute to the richness of daily life, from tires to textile materials.

Organic chemicals that clean the world's various water environments, from pools to ballast water.

Fine chemicals that assist cutting-edge technologies all over the world, from IoT to 5G.

Our technologies support the safety and advancement of our lives.

### Organic chemicals



Chlorinated isocyanurates were mass produced by SHIKOKU KASEI for the first time in Japan in 1964. NEO-CHLOR, a disinfectant for pools that leverages the excellent properties of those chlorinated isocyanurates, is an example of our products that contribute to improving water sanitation conditions, from the sanitation management of bathing facilities to the wastewater treatment of industrial water, which are in use all over the world.



NEO-CHLOR pool disinfectant



NAPIX automatic chlorin  
feeder for pools



WASHMANIA washing machine  
drum cleaner

### Inorganic chemicals



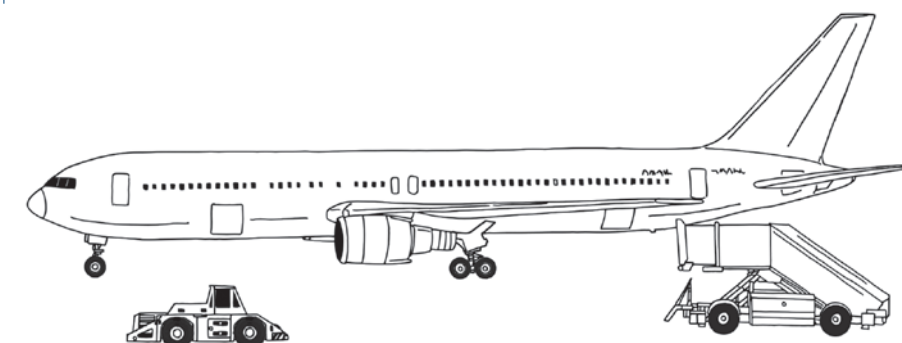
We deliver numerous products that are deeply intertwined in daily life, including (1) insoluble sulfur, MUCRON, which is indispensable for the production of radial tires, (2) carbon disulfide, a raw material for the chemical fiber rayon, and (3) sodium sulfate and sodium carbonate, which are used in synthetic detergent powders and bath salts.



Insoluble sulfur, MUCRON,  
a vulcanizing agent for  
radial tires

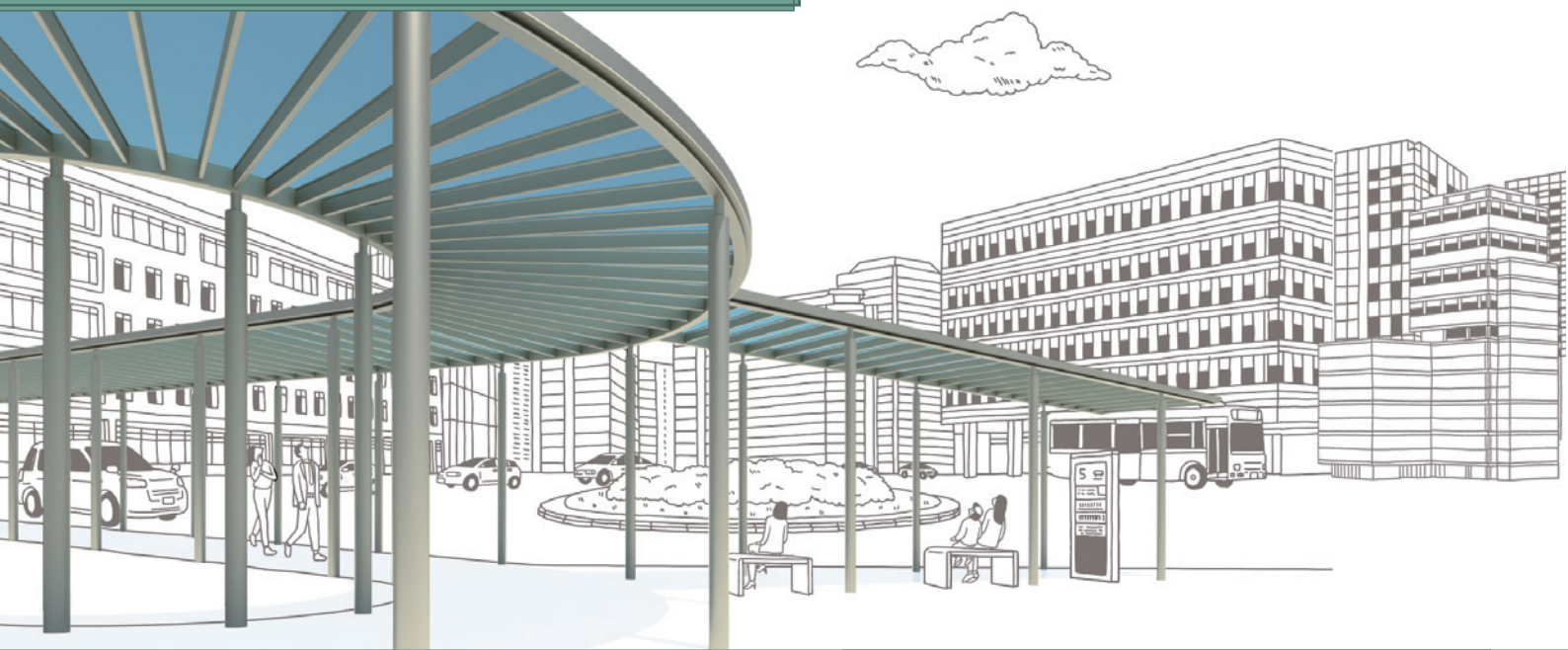


Chemical fiber rayon made  
with carbon disulfide





Housing Materials Operations



SHIKOKU KASEI Group  
supporting the Housing Materials  
operations



Development, manufacture and sales of interior  
finishing materials, exterior finishing materials,  
paving materials, and exterior products

SHIKOKU KASEI KENZAI CORPORATION

Manufacture of exterior products  
SHIKOKU KEIZAI CORPORATION

Manufacture of exterior products  
RYOUWA KASEI KOGYO CO., LTD.

Manufacture of exterior products, and store-related  
products such as shutters

SHIKOKU KEIZAI KANTO CORPORATION

Manufacture of exterior products  
SHIKOKU KOHKI CORPORATION

Interior finishing materials,  
Exterior finishing materials,Paving materials



Our extensive lineup accommodates all manner of situations,  
from individual homes to commercial and public facilities.  
We actively engage in the development of products not  
only with quality designs, but that also consider health and  
are environmentally friendly, such as interior finishing materials  
with a unique function that adsorbs and decomposes  
formaldehyde to render it harmless, and paving materials  
made from recycled materials.



Interior finishing materials



Exterior finishing materials



Paving materials

Designing a new lifestyle in the future  
and contributing to community development  
around the world for everyone's happiness

Interior finishing materials, Exterior finishing materials,  
and Paving materials that provide comfort in living spaces with traditions and new technologies.  
Home exterior products that contribute to an affluent lifestyle with their functionality and excellent design.  
Landscaping exterior products that create a more comfortable urban space through their beautiful designs.  
The well designed and high-quality products that we pursue enrich and secure comfortable lifestyles.

Home exterior products



SHIKOKU KASEI was the inventor of the "accordion gate,"  
which has become synonymous with carport-front gates.  
Our product lineup, which includes gates, fences, carports,  
decks, and terraces, offers functionality and outstanding design.  
Coordinating with SHIKOKU KASEI's unique  
Exterior finishing materials and Paving materials expresses  
the individuality of residents.



Facades



Carports



Wood-plastic-composite decks

Landscaping exterior products



With a focus on materials and design that many visitors  
to a place will find pleasing, our landscaping exterior products  
also propose the creation of public spaces that are functional  
and comfortable. Along with meticulous attention to safety,  
we contribute to the development of beautiful townscapes  
with proposals that make the most of our ability to  
respond flexibly to custom orders.



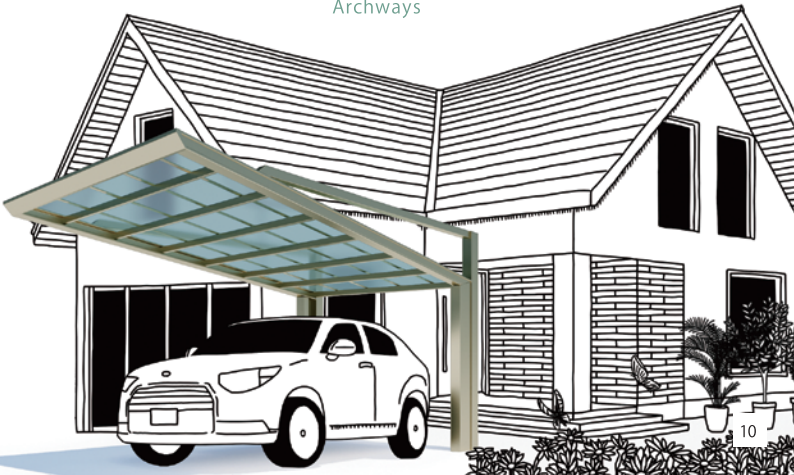
Large accordion gates



Bicycle ports



Archways





## Other Business



### System development



#### Total support to help customers utilize IT

##### SHIKOKU SYSTEM KOHBOH CORPORATION

We provide total support, from system planning and consulting to development, construction, and operation, and contribute to improved on-site operations and enhanced productivity. Our one-stop solutions meet the needs of system development, Web community creation, security measures and a multitude of other IT scenarios.



### Food operations



#### Delivering the appeal of local food across the nation

##### SHIKOKU FOODS & TRADING COMPANY

We operate four MOS BURGER hamburger franchise shops in Kagawa Prefecture, and conduct sales of giftware, daily use products and emergency supplies. In addition, as a new business, we sell the local Marugame delicacy of "Honetsuki-dori" (boned chicken) under the brand name "Oyawaka" on our e-commerce site and in food trucks. We spread happiness to people by bringing local food to the nation.



### Testing & analysis operations



#### Contributing to the creation of comfortable environments through analysis

##### SHIKOKU ANALYTICAL LABORATORIES

We utilize our experience and know-how accumulated over the years to perform analysis of drinking water quality, exhaust gas measurement, soil sediment analysis as designated by the Pollution Control Law, noise and vibration measurement, and chemical analysis, among others. Working toward solutions for a wide variety of environmental problems, we are contributing to the creation of comfortable environments.



## Rolling out a variety of products and services that support prosperous and comfortable lifestyles

Starting with system development that supports industry and society, the SHIKOKU KASEI Group engages in a number of businesses that provide benefits such as building a living environment that is safe and secure.



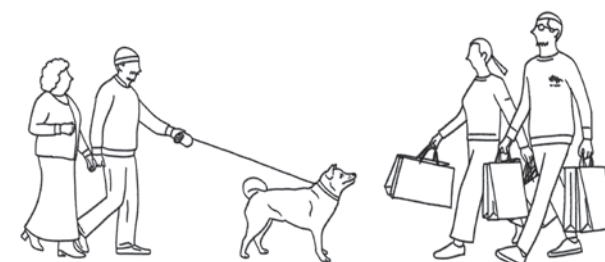
### Environmental business



#### Offering safe and comfortable living environments in Japan's regions

##### SHIKOKU ENVIRONMENTAL BUSINESS COMPANY

In addition to maintenance and inspection of various water treatment facilities such as septic tanks and wastewater treatment, as well as transportation of waste, we provide building management, home remodeling, and sales and installation of solar power generation and all-electrification-related products. We support a hygienic and comfortable living environment with our advanced technology and meticulous service.



### New business initiatives



#### New businesses to forge ahead in a new era

We are also actively engaged in creating new businesses that are necessary for corporate growth. We called upon all Group employees to come up with new ideas with the goal of commercialization. As one example of that, we used exterior technology to develop our "PARKLET" business which creates lively urban spots for people to relax, and we are working to develop this business under the brand name "SWALOCCA." Going forward, the Group will continue to work as one to achieve new possibilities.

#### SHIKOKU KASEI Group, building a wide array of businesses

Support operations, etc., related to accounting, finance, human resources, legal, tax, labor relations, compliance, internal control, and asset management.

##### SHIKOKU KASEI CORPORATE SERVICE CO., LTD.

Import and export of chemicals and housing material products

##### SHIKOKU (SHANGHAI) CO., LTD.

Non-life insurance and life insurance agency

##### SHIKOKU FOODS & INSURANCE SERVICE CO., LTD.



# A trajectory of “Doku-sou-ryoku (creativity)” that continues to the present and links us to the future

The history of SHIKOKU KASEI, having begun with the development of a new manufacturing method for carbon disulfide, is truly a story of tackling challenges. After our founding in 1947, we developed numerous products while continuing to refine our proprietary technology.

Chemicals operations

Housing Materials operations

Raw material for rayon.  
Established an innovative manufacturing method to solve the flaws of conventional manufacturing. Our original product.



1947  
Carbon disulfide

Developed an in-house manufacturing method for chlorinated isocyanurates. Expanded applications from bleach to disinfectants for swimming pools, septic tanks, etc.

1964  
Chlorinated isocyanurates

Patents and technologies acquired through a business transfer were independently evolved, and we became a pioneer in the field of fine chemicals in later years.

1968 Gliccoat  
1968 Imidazole

1967 THEIC

1984 “Insoluble sulfur,” a rubber vulcanizing agent

1957 Sodium sulfate

1961  
Synthetic detergent additive “CMC”

A byproduct of the rayon manufacturing process, sodium sulfate decahydrate was made into a raw material that gave rise to sodium sulfate using our proprietary manufacturing technology.



1970  
Interior finishing materials

We developed CMC, which had been used as a glue for fiber walls, as a product of the Company, and developed proprietary JULUX interior finishing material. A first step toward launching Housing Materials operations.

1976  
Exterior finishing materials

1972 Accordion gates



These gates can be easily opened and closed with the telescopic mechanism, responding to the narrow housing lots in Japan. This was the product used to enter the exterior industry.

1977 Carports

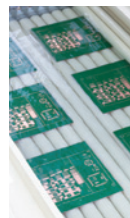
1979 Aluminum shutters

1980 Aluminum gates and shutters

1983 Archways



Developed by applying technology for imidazole. We were an early adopter of environmental performance features such as elimination of organic solvents and lead-free solder, and have achieved the top share of the global market in this field.



1990  
Gliccoat-SMD

1992  
Minute chemicals

Improved performance in terms of heat resistance and flame retardance contributes to expanding the range of use for plastic parts.



2004  
Functional materials

Adhesion improvement process that applied organic synthesis technology. Improves adhesion between copper and resin.

2016 GliCAP

2008 Roughening agent

2021  
Semiconductor process materials

A raw material for radial tires used on automobiles, aircraft, and large construction machinery. Entered industry with knowledge and technology for carbon disulfide, the Company's founding product.

1994 Paving materials

1997 Diatomaceous earth wall materials

2001 Block exterior finishing materials

2003 Charcoal wall materials

2017 Polished walls

1997 Diatomaceous earth wall materials

Developed with a focus on the health effects of indoor chemical substances, this wall coating takes advantage of diatomaceous earth's excellent functionality, including humidity control, heat insulation effect, sound absorption, sound insulation, and fire resistance.

1998  
Garbage containers



Developed with a focus on the appearance problem of garbage dumpsters. Creation of a new market of garbage collection containers for beautiful townscapes.

2009 Green Shade

2012 Art Wall